

CAULFIELD HISTORICAL SOCIETY

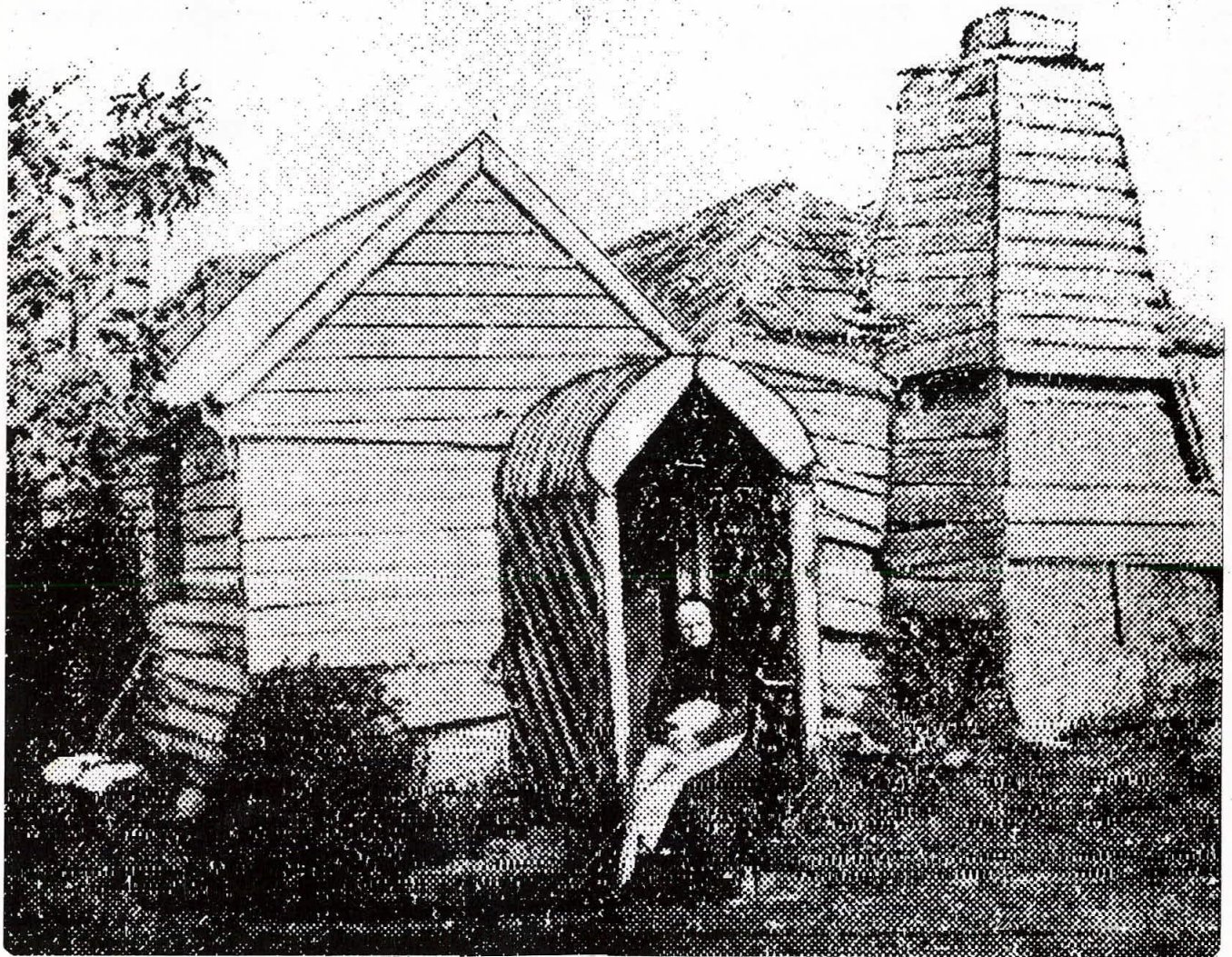
P.O. Box 202, Caulfield South, 3162

15

NEWSLETTER

April 1975

ISSN 0310-1703 20 cents



THE SHIP 'GLEN HUNTLY' AND THE FIRST HOUSE IN CAULFIELD

In the 'Age' of 20 June 1931 appeared a letter to the editor relating to the Red Bluff, Point Ormond and the wreck of the ship 'Huntly'. The writer refers to a previous letter in which,

"One of your correspondents speaks of the graves at the old Bluff, and says he does not know the names of those buried there. One was named Falconbridge, the first mate of the ship. The other was a sailor, but I do not know his name. They were both drowned. I herewith enclose a portrait of the widow of
contd. p.54

THE SHIP 'GLEN HUNTLY' contd.

Mr. Falconbridge, taken some years ago sitting at the door of her home, the first house built in Caulfield. She was then 91 years old. She and her daughter lived together till the daughter married. The old lady died some years ago and the daughter shortly after."

In fact the 'GLEN HUNTLY' was not wrecked, but quarantined at Point Ormond. She arrived in Port Phillip with 153 passengers on 17 April 1840 under the command of Captain Buchanan, having left Greenock, Argyleshire on 14 December 1839.

"... about six weeks after her departure fever of a typhoid character began to make its appearance amongst the immigrants and continued to prevail for the remainder of the voyage." (1)

A quarantine station was set up at the Red Bluff in tents provided by the government. Twelve persons died on the voyage with a further four dying in Port Phillip. George Denham died on the day the ship arrived in the harbour. George Armstrong and James Mathers both died on 6 May and John Craig died on 14 May. The quarantine station was divided into two camps - sick and healthy. On 1 June all persons in the healthy camp were liberated and those who had recovered transferred from the sick camp to the healthy camp. These were released on 13 June and the remainder on 1 July.

"There were 52 persons either actually ailing or convalescent when the immigrants came on shore." (1)

The three persons who died in the camp were buried on the Red Bluff but their graves were transferred to the St. Kilda

cemetery in 1898 when the sea began to encroach on them. Mrs. Bowman of Caulfield, who was the daughter of John Craig, was present at the reinterment. (2)

The story that Falconbridge was first mate of the ship has not been verified. Nevertheless, it is interesting.

Was Mrs. Falconbridge's house the first in Caulfield? It is unlikely that this question can be resolved now but it is certain that the Falconbridge family were not amongst the earliest residents in the district. Indeed, Isaac Falconbridge (sic) was not listed in the rate books until 1870 and in the Melbourne Directories under 1872. He was described as a hawker.

The house was described in the rate books of 1870 and 1871 as of wood with three rooms in a ½ acre of land at Camdentown. From 1872 until at least 1880 it is described as a mud house of three rooms and a ¼ acre of land.

Mrs. Elizabeth Falconbridge is recorded as occupant of the house from 1885 until 1908 when, presumably, she died. The house, now demolished for many years, was on the north side of Almond Street, approximately midway between Hawthorn Road and Jasmine Street (Jessamine Street in early directories).

REFERENCES

1. Shipping List, Public Record Office
2. Cooper J.B., The History of St. Kilda Vol.2, p.33
3. Caulfield Road Board, Rate Books
4. Victorian Historical Magazine, Vol.XV, December 1933.

What now is the oldest house in Caulfield?

NEW MEMBERS

Mrs. M. Bromfield, Carnegie

POSTAL REGISTRATION

The Australian Post Office has granted the Society's application for registration of the NEWSLETTER as a periodical. NEWSLETTER will now be posted at a lower cost than previously.



OUTER CIRCLE RAILWAY

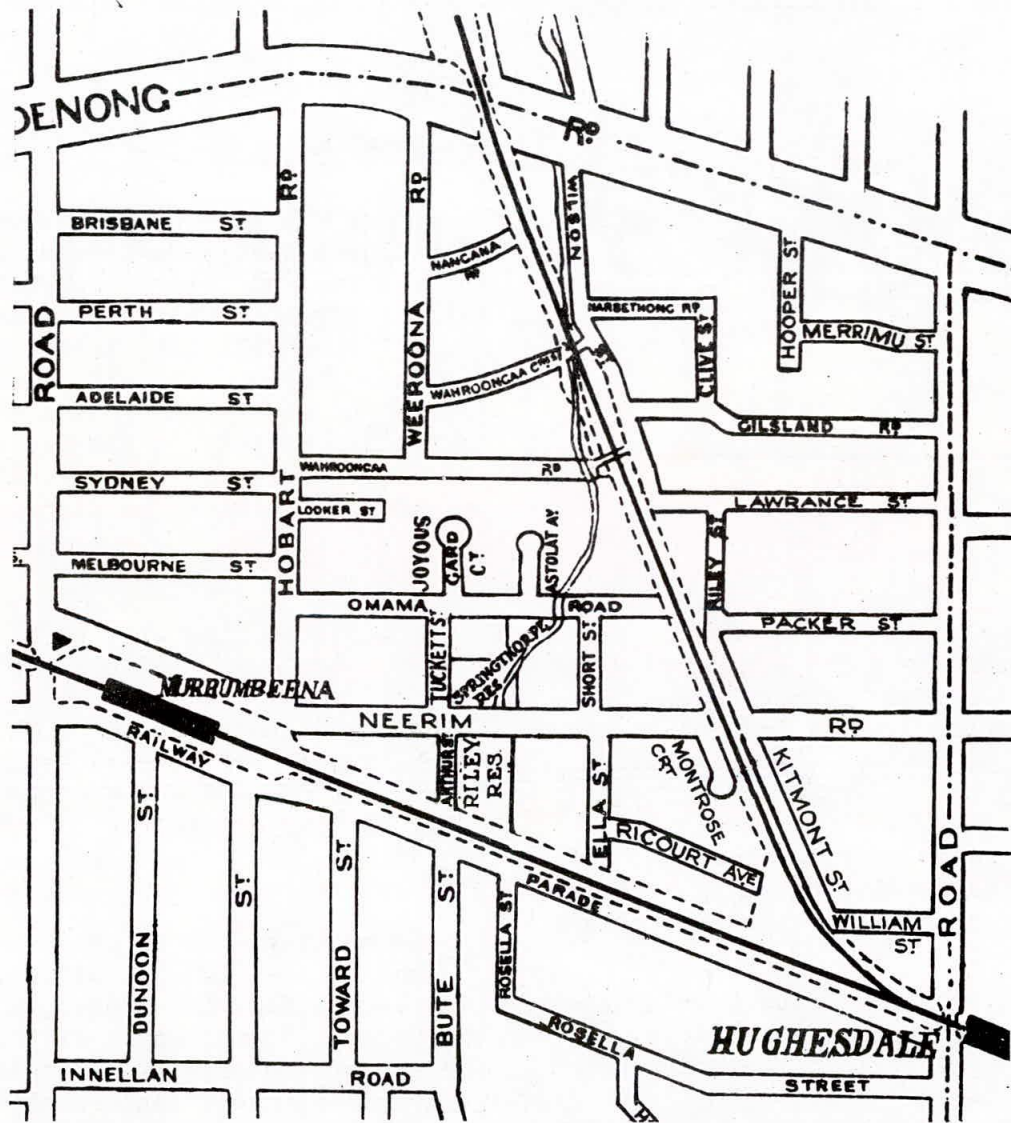
Seven members of C.H.S. made the tour of the Outer Circle Railway with the Royal Historical Society and the Australian Railway Historical Society on Saturday 19 April. The tour closely followed the route of this interesting railway.

Construction of the railway was authorised by Act of Parliament on 12 December 1884 at an estimated cost of £145,000 for 10½ miles of railway. The contract for construction was signed on 15 February 1888 and the line completed three years later. The contractors were Messrs. Graham and Wadick and the final cost was £584,000.

The railway ran from Oakleigh through Hughesdale, Chadstone, East Malvern, Alamein, Ashburton, Burwood, Hartwell, Riversdale, Camberwell, Canterbury, Balwyn, Deepdene, East Kew, North Kew, and Alphington to Fairfield. The section from Waverley Road to Oakleigh was opened on 24 March 1890. From 1893 onwards sections of the line were closed, with the Ashburton to Oakleigh section being closed from 9 December 1895.

It is on the section of track between Hughesdale Station and Neerim Road that the native garden referred to elsewhere will be established.

These notes are taken from a detailed description of the line compiled by Mr. R.K. Whitehead of A.R.H.S.



THE ROUTES OF THE MELBOURNE TO DANDENONG RAILWAY AND THE OUTER CIRCLE RAILWAY THROUGH CAULFIELD

NATIVE PLANT GARDEN

The Caulfield Council has advised that it has accepted in principle the proposal to establish a native plant garden in Murrumbeena. Arrangements are being made to secure a lease of the land from the Victorian Railways.

Caulfield Historical Society had already made representations to the Victorian Railways for the preservation of a length of post-and-rail fence which is on the street frontage of the land. This matter will also be taken up with the Council.

NEAR NEIGHBOURS?

In 1905 there were only five houses on the block bounded by Kooyong, Glen Eira, and Hawthorn Roads and Murray Street. The only one still standing is "Lirrewa" south of the City Hall in Lirrewa Grove. The others were "Glen Eira" (demolished 1964), "Royston" (demolished early in 1972) both of whose grounds now form the Caulfield Hospital, "Moodkee" and "Belton" fronting Glen Eira Road, "Sylverly" at the top end of Sylverly Grove and "Sandgate", located near the Partons Dairy in Hawthorn Road.

MEETINGS

FEBRUARY 1975

Members who attended this meeting on 19 February last were treated to an informative and interesting talk on early Australian coinage and medallions. Mr. R.T.N. Jewell illustrated his talk with a number of rare and valuable pieces and covered many aspects of Australian history in his description of the research required to reveal the origins of the items on display.

APRIL

The April meeting will be held at the Old Post Office on 16 April at 8-00 p.m.

The guest speaker will be Mr. David Trembath who will discuss Caulfield historical records and aspects of the early history of Caulfield.

JUNE

This meeting will be held on Wednesday 18 June at the Old Post Office. Lieut.-Col. H.C. Lee-Archer, a member of the Council of the Royal Historical Society of Victoria, will present a programme of magic lantern slides of early Melbourne. A "real" magic lantern will be used.



HISTORY COLLECTION

The Society would be pleased to receive from members and non-members any material in the form of photographs, letters, diaries, and historical items which could be used in the preparation of a history of the City of Caulfield.

We have already received some interesting material donated by members and have added to this recently with the acquisition of:-

- Cast iron verandah plaque bearing the seal of the Shire of Caulfield.
- Extensive collection of Newspapers and other material relating to the activities of the City of Caulfield during World War II.