



GLEN EIRA HISTORICAL SOCIETY NEWSLETTER

THE CANTALA ESTATE

After I moved to North Caulfield in 1981, long term neighbours used to speak in reverential terms of the Cantala Estate. Forty years later an opportunity presented itself to discover more about *Cantala* and those who lived there.

Prior to 1891, the site on which the mansion *Cantala* was built was occupied by *Waiora*. The property was approximately 15 acres in size with frontages to what we know today as Dandenong, Waiora and Alma Roads. In 1889, a public notice shows the site was purchased by Septimus Miller at a 'moderate price of £21,000 to build a mansion'.

The Owner

Born in the early 1850s, Septimus was the seventh child of one of Melbourne's richest citizens the Honourable Henry 'Money' Miller and Elizabeth Mattinson. As a young man Septimus acted as manager of various large stations at Kulkyne in the Riverina, owned by his father. Passionate about horses, Septimus had a lifelong connection with many aspects of horse racing and breeding. Before and after his marriage, Septimus was very prominent and active in horse racing and polo circles. He was a member of the Victorian Racing

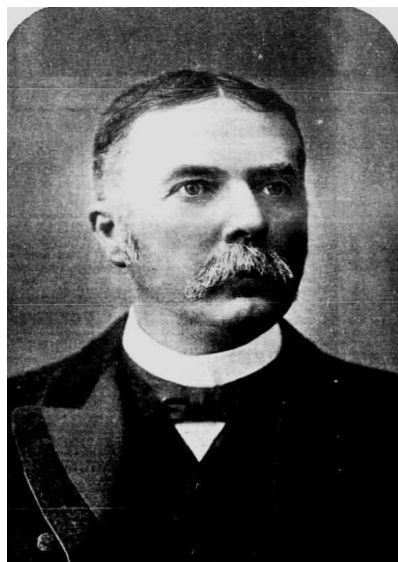
Club and Caulfield Racing Club, serving on the VRC committee for over 30 years and as Chairman for 12 years.

In late 1888, Septimus married Clara Johnstone Bell and their daughter Gwendoline was born a year later. No doubt his inheritance, marriage and elevation in society led to a desire to build a mansion of his own. Although Septimus grew up in Kew, at his parents' home, *Findon*, he decided on Caulfield as the location for his home. After the Shire Act of 1863, the Shire of Caulfield became studded with mansion homes and gained a reputation as an area for 'the gentry'.

The Architect

The *Cantala* mansion was designed by William Salway FRIBA, FVIA who had been practicing in Melbourne for nearly 20 years after his return to Australia from China, where he'd spent nearly seven years. Salway designed many buildings around Melbourne including *Knowsley* (now *Raheen*) in Kew, the *Athenaeum Club* in Collins Street, the *Block Arcade* and the official grandstand at Caulfield Racecourse. As Septimus would have been actively engaged in the grandstand project, this could explain how he and Salway met and why he selected him as the architect for his home.

Continued on page 3



Above: Septimus Miller, *Australasian* 23 March 1895 (GEHS collection).



Above: *Cantala* 1903 (GEHS Collection).

CONTENTS

- 01 Cover story** Cantala Estate
- 02** From the President
- 05** Maintaining and caring for the collection
- 06** Developing a resource on Chinese residents in Glen Eira 1865 - 1950s
- 07** An Indigenous history of Glen Eira
- 08** An enquiry and an acquisition
- 09** Heritage Matters
- 11** Obituary and Events

FROM THE PRESIDENT

It's been a busy few months for our volunteers handling an unusually high number of enquiries from the public. In this newsletter you will read about one such enquiry concerning the location of the Glen Huntly Fire Station. Enquiries were also received about: O'Neill College Elsternwick which closed in 1982 and merged with Star of the Sea College; St Sidwell's the home of horse trainer Isaac Carslake, demolished in the c1930s, the Annie and Arthur Abrahams Reserve in Bentleigh East the site of a factory until the 1990s. We would love to hear from anyone with knowledge of the Abrahams family.

We are very pleased to welcome new volunteers, Heather, Sal, Ed and Carol. Heather who joined during 2022 has contributed an article on the mansion, *Cantala*, to this newsletter. You can also read more about the work of our volunteers on page four.

Anne Kilpatrick and David Hardham have been busy preparing for our catalogue to move completely to Victorian Collections (VC), a free collections management system run by AMAGA (Australian Museums and Galleries Association) in partnership with Museums Victoria. This is a big job but will mean easier access for the public to our collection. Some of our collection is already on VC and can be found at <https://victoriancollections.net.au/organisations/glen-eira-historical-society>

Our editorial team continues to work on researching and writing the history of GEHS, to be published in 2024. We have located four founding members from 1972 and hope to speak with them soon.

I'd like to appeal to members and friends who may have some music related memorabilia from Glen Eira. This could be photographs of bands, choirs, musical theatre, or music programs, tickets, posters and other ephemera. In September this year we will be holding an exhibition in the Glen Eira Gallery, 'Musical Notes from Glen Eira'. We would love to accept your local music memorabilia into our Collection or we could accept your items on loan for the display.

We have one new Committee member but are still looking for more members, particularly with our AGM coming up in late July. And a reminder to have a look at our website <https://www.gehs.org.au/> for latest news and events, including updates on Heritage issues.

Barbara Hoad
President, Glen Eira Historical Society



Above: O'Neill College, St James Parade, Elsternwick in 1972, now Leibler Yavneh College (GEHS Collection).

CANTALA ESTATE (CONTINUED)

The House

Salway's design for *Cantala* was in the Italian Renaissance style. Tenders were advertised in *The Age* from March 1890 for 'Erection of a Mansion, Stabling and Lodge of Armadale for Septimus Miller.' The exterior was artistically and sufficiently broken up by the tower, balconies and portico to make it picturesque in the landscape. Located on the high section of land, the balconies provided good views of the bay and the suburbs with mountains in the distance.

The entrance hall was a large room (40ft X 30ft) with a colonnade at one end that screened the staircase. It surely provided a focal point to the house. The drawing room was L-shaped, measuring 25ft X 30ft with a bow window and panelled plaster ceiling. The dining room was of similar proportions 26ft X 30ft with a fine bay window opposite the fireplace. In all, the residence consisted of 24 rooms and the second storey layout was identical to the first floor.

The approach to the house was from a broad winding drive with iron gates at the entrance, set at an angle to Dandenong Road. A feature of the garden (at the beginning) was a stretch of original bush through which ran a bridle track for horse riding. Septimus was fond of this bush as it reminded him of Caulfield's early appearance and he loved to ride in this section of the estate.

Life at *Cantala*

Public notices and social articles, show the *Cantala* mansion and gardens were used frequently for

garden parties and high social events. Mrs S Miller was often identified as one of the well dressed women of the period. Life was prosperous for Septimus. However in 1902, his life was impacted by the death of his only daughter and several years later in 1910, his wife died. By 1912 and in his late sixties, Septimus married again to Helen Muriel Henderson. Although they married on St Valentine's Day, at the residence of her mother *Boytah* in St Kilda it appears there were 'differences' - Helen was Catholic and Septimus was Anglican. Their only son Ronald Nevil Damian, born 1915, was educated at Xavier, whereas Septimus had been educated at Melbourne Grammar.

Later Years

Septimus died in 1925, leaving one of the most complex estates in the State of Victoria because his will had multiple codicils. A special clause in his will directed that Damian would 'forfeit all his interest in the will except for an annuity of £300, in the event of his becoming a priest of the Roman Catholic Church, or taking orders in any institution connected with the Church.' Although he left funds for his widow and son, along with generous gifts to family members and numerous Anglican, medical and charitable organisations, his widow appealed to the will's Trustees a year after his death for more funds (£750 annually) to maintain *Cantala* and the extensive grounds.

The rise in land prices and the cost of upkeep led to the decline in the brilliant mansion period of Caulfield and *Cantala* was no exception. The first subdivision on the Cantala Estate happened in 1933. Land fronting Alma and Waiora Roads was auctioned. A further 32 lots were auctioned in 1938 at an average price of £1,230. Helen and her son,

Continued on next page



Above: The dining room from *Cantala* complete with doors, panelling, ceiling and fireplace were removed to the *Cantala* Room at the new Hotel Australia, Collins St in 1939 (SLV Collection).

CANTALA ESTATE (CONTINUED)

Damian, continued to live in *Cantala* until it was demolished in 1939 and the remaining five acres were subdivided into 21 lots with an average price of £1,105. Cantala Avenue and Findon Avenue were created in 1939.

Helen and Damian, moved to another house, also called *Cantala* at 29 St Georges Road, Toorak. She died in 1939 and was buried at Melbourne Cemetery in the Roman Catholic section. Her will left valuable pieces of jewellery to the Roman Catholic Archbishop of Melbourne, Dr Mannix, and other bequests to Catholic organisations and charities.

Today, all that remains of the Cantala Estate and its connection with Septimus Miller are the names of Cantala Avenue and Findon Street, Caulfield North.



Above: the Drawingroom at *Cantala* (*Punch's illustrated interviews with Victoria's representative men at home*, Melbourne Punch Office 1904).

Heather Mallinson
Member/Volunteer, Glen Eira Historical Society

References:

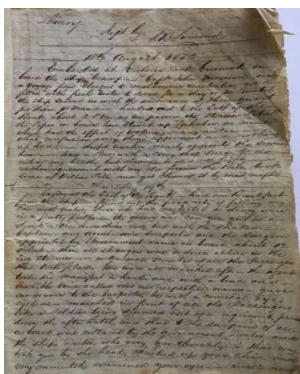
From Sand, Swamp and Heath...A history of Caulfield by
P. Murray and J. Wells (1980).

GEHS Collection, Public Records Office Victoria, TROVE online newspapers.



Above: Interior Cantala, Septimus and Mrs Miller c1903, (*Punch's illustrated interviews with Victoria's representative men at home*, Melbourne Punch Office, 1904).

MAINTAINING AND CARING FOR THE COLLECTION



Left: First page of JB Limond's 1852 diary. The diary has now been transcribed by GEHS member Sal Joyce (GEHS Collection).

Right: Rosemary Limond left, accepting transcribed 1852 diary of her great grandfather from Sal Joyce (Photo: Barbara Hoad).

For many, **Glen Eira Historical Society** brings forth images of a building where visitors enter into a room of interesting display cabinets with historical memorabilia and memorials plus photographs and plaques on the wall. Its members and visitors associate the Society with its newsletter, talks and lectures covering many topics of interest. In the 'engine room' of GEHS is a team of dedicated volunteers in the work rooms down the corridor or upstairs on a Tuesday or working on a project at home. Under the guidance of the Committee members, volunteers are organising, updating or enhancing the extensive collection which provides the backbone to research projects and requests from the public for information.

Upstairs is to be found Colin confronted by two rows of trophies, plaques and large framed photographs; over 50 items in all and formerly memorabilia held by the Glen Eira City Band until storage space became an issue. In 2022 The Glen Eira City Band donated its memorabilia to GEHS. Included were items associated with the former Caulfield City and Caulfield Brass Bands. These items were initially listed and annotated and Colin is in the process of now classifying these items formally into the GEHS Catalogue. In addition, he is facing the challenge of establishing a storage system that will enable individual items to be readily located if there are requests from members of the public seeking information for personal research purposes. We are fortunate that Colin comes with an engineering background that lends itself to practical solutions.

Also, more often than not, upstairs, is Ailsa one of the longer serving volunteers whose keyboard skills are called on to enter new data into the collection system. It was Ailsa who last year typed out the initial lists with handwritten annotations of the Glen Eira Brass Band collection which Colin is using to catalogue the items.

Downstairs can be found long term volunteer, Margaret, studying closely one of the GEHS held *Sands and McDougall* directories for information about a resident or business that might assist a request for information. GEHS does not have a full collection of *Sands and McDougall* directories so

Margaret then visits the Prahran Mechanics Institute Library which has a more complete set of directories. The elusive missing information may be discovered in one of those.

Claire can also be found in the downstairs work room. Her focus has been on real estate agent listings for sales of homes in the Glen Eira area. In particular she has focused on the houses built in the 1950s with distinctive design features. In a number of cases evidence would suggest that the design may have been linked to one of the migrant architects who arrived in Victoria in the early 1950s. Such buildings, if they can survive rampant developers, will become of increasing historical importance. If not, at least their features can be recorded for posterity.

More recently, the 'engine room' increased its power. Heather who joined during 2022 has contributed the article on the mansion *Cantala* that begins this newsletter. Sal, who also joined us in 2022, has been working from home transcribing an 1852 diary which records the voyage of a Scotsman (a relative of GEHS member Rosemary Limond), from Greenock Scotland to Melbourne aboard the *Grampian*. She has also developed a glossary of terms to explain the many old Scottish words he used.

This year we gained two new volunteer recruits; Ed and Carol. Ed has been learning how to research using resources on hand at GEHS. He has completed some research into the history of his own house which has been added to our files. Carol recently attended an online session on Collections Care – Policy Planning and Development run by Australian Museums and Galleries Association (of which GEHS is a member). Carol will now review our Collections/Acquisitions Policy, which informs the type of items we wish to receive into our Collection.

One senses GEHS is entering a new era.

Neville Daynes
Member/Volunteer, Glen Eira Historical Society

DEVELOPING A RESOURCE ON CHINESE RESIDENTS IN THE GLEN EIRA AREA, 1865-1950s

Currently I have recommenced work on a project I started in 2011, tracing Chinese residents of the Glen Eira area from the 1860s to the 1950s.

This seemed to be an important project, as the Chinese were such a large migrant group and there is so little known about where they came from and where they went. After the Gold Rush many Chinese people moved to this area and commenced work as Market Gardeners. Families were born and new generations moved into other areas of employment.

Tracing them isn't easy. Several families may have lived on one site to work the gardens and single men also lived there. They don't show up on most of the records; women in particular seem to be invisible.

Racism was terrible and the people were badly treated but resilient. Some local books have written the Chinese community out of their histories, despite there being several hundred in the area over a long period of time.

From about the 1940s many Chinese seemed to have moved on. Why and where to?

I am endeavouring to compile a resource of their names and activities (well those that are recorded). If you know of any of these families who may have attended school with you or your family, years ago, I would love to hear from you. We are hoping to share this with any interested group or individual.



Above: A Chinese garden at Caulfield, 1919, Robert Haddon 1866-1929 artist (SLV collection).

The Resource will be a collection of various articles. Extracts from books on the local areas are included. Frequently these books didn't contain an index or Chinese people just didn't rate a mention, but reading the text, they are often there, in the background. Copies of the cover and details of each book, including copies of the relevant pages will be included in the Resource.

The boundaries around Glen Eira were fairly fluid, the information flows to Elwood, Brighton, Malvern and parts of Oakleigh. It is not a comprehensive work but I have made every attempt to cover reasonable accessible information. It will be an ongoing effort, which others will hopefully contribute to.

The *Sands and McDougall* Directories are a major source of information. The earliest volumes did not give lot/house numbers, so markers such as nearby streets are used. This is an interesting but eye straining project, as every name entered must be checked, street by street. Many of the names have been misspelled or anglicised, out of convenience, confusion or cultural misunderstanding. This is another obstacle.

Unfortunately we only have a few volumes of these directories but the State Library of Victoria has digitised theirs, every fifth year. This allows research from home; people still came and went between those five years.

I am hoping this is not duplicating work done by others and am willing to share my work.

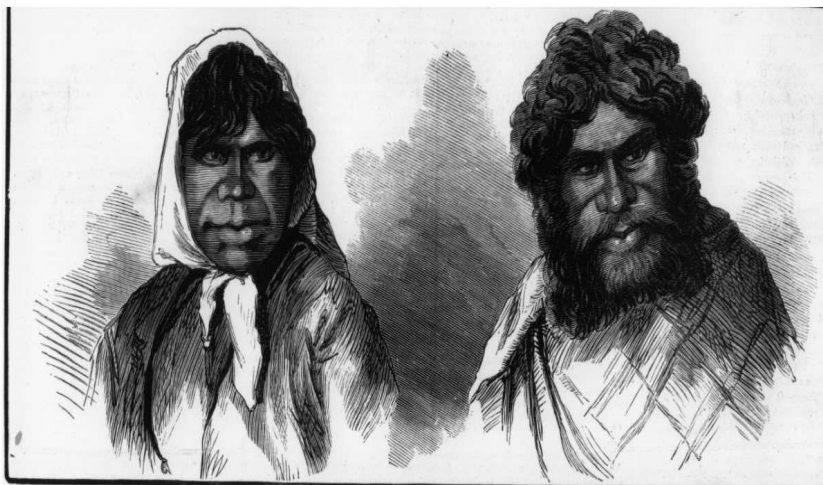
Carol Stals

Member/Volunteer, Glen Eira Historical Society

'Several families may have lived on one site to work the gardens and single men also lived there. They don't show up on most of the records; women in particular seem to be invisible'.

SPEAKER SERIES

AN INDIGENOUS HISTORY OF GLEN EIRA



Jimmy and Nancy Dunbar,
two well known members of the Boonwurrung
(La Trobe Pictures Collection, State Library of Victoria)

Above: Jimmy and Nancy Dunbar lived around Elsternwick, Mordialloc and Brighton in the 1870s (SLV collection).

‘An Indigenous history of Glen Eira’, a talk by Professor Ian Clark was live-streamed to a large group of members and friends of the Glen Eira and St Kilda Historical Societies on Sunday 5 March 2023 at the Army and Navy Club in Acland St, St Kilda.

In 2020 Ian was commissioned by the Glen Eira City Council to write an indigenous history of the area and identify culturally significant sites. This talk presented a summary of his extensive research.

Ian told us that the Boonwurrung people moved between Mordialloc, Brighton and Melbourne, often camping at Leman Swamp, now Lord and Koornang Reserves in Carnegie.

Over 70 street names in Glen Eira are believed to be of Aboriginal origin; Bealiba Rd = red gum tree creek, Booran Rd = ant and Ulupna Rd = Yorta Yorta word for sheep.

The 20th century, Ian notes, was a time of activism when pro-Indigenous white residents worked to promote Aboriginal social justice. There were visits to the area from Aboriginal dignitaries such as Pastor Sir Doug Nicholls who visited Gardenvale in the 1940s and David Unaipon who spoke at St John’s Presbyterian Church, Elsternwick in November 1914. David Unaipon is also famed as one of the faces of the Australian fifty dollar note.

Also noted were the Aboriginal soldiers who were patients at the Caulfield Military Hospital during WWI and the men from Lake Tyers who signed up at the Caulfield Military Camp at Caulfield Racecourse during WWII.

In Murray and Wells’ history of Caulfield, *From Sand Swamp and Heath...* published in 1980, there is a brief mention of grinding stones found on Bambra Hill. Ian presumes this was the area along Bambra Road near Dover and Marara Streets. I asked him what happened to these stone tools and he replied they could be in a private collection somewhere, if not held in one of our Museums.

We look forward to reading the Indigenous history of Glen Eira which we understand will be published sometime this year. Until then you can read An Indigenous History of Stonnington, also by Ian Clark (and Laura M. Kostanski).

<https://www.stonnington.vic.gov.au/files/assets/public/about/about-stonnington/history/indigenous-history-full-report.pdf>

Barbara Hoad
GEHS President

‘Over 70 street names in Glen Eira are believed to be of Aboriginal origin; Bealiba Rd = red gum tree creek, Booran Rd = ant and Ulupna Rd = Yorta Yorta word for sheep’.

AN ENQUIRY AND AN ACQUISITION

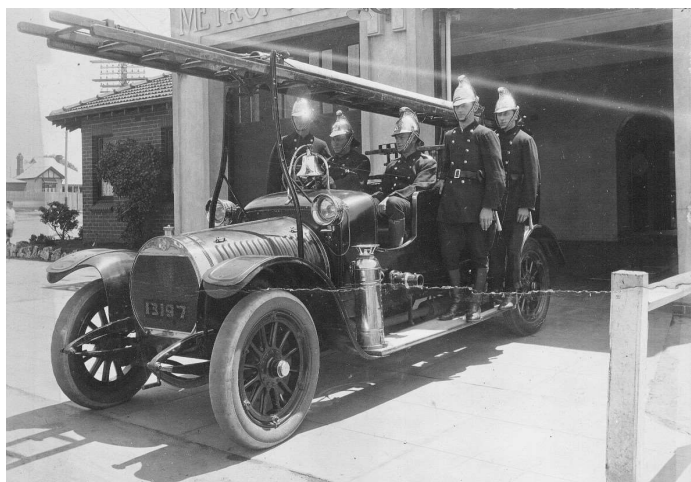
We have been extremely busy lately answering a higher than usual number of enquiries from the public on all sorts of topics. An enquiry earlier this year came from Charles Bartlett seeking information about the Glen Huntly Fire Station. Charles was researching family history and, in particular, was hoping to find:

- where exactly, at the intersection of Grange and Glen Huntly Roads, the fire station had been sited
- when the building had been demolished
- whether the Society had any photographs that could be scanned and sent to him

The building provided sentimental memories for the family. It was there, his grandfather, Eric Carroll, had served as a fireman in the early 1920s and was introduced to his wife to be.

President Barbara Hoad immediately set to work. The Society had a file on the Glen Huntly Fire Brigade and, included in it, were colour photographs of the station taken sometime in the 1980s before its demolition in 1988 or 1989. In addition there were historical photographs donated by the Melbourne Fire Brigade Museum. Barbara provided copies of both the colour and historical photos. She noted when the building had been sold then subsequently demolished for offices. The colour photos clearly indicated where, at the intersection the fire station had been sited. In conclusion, her email expressed the hope that Mr Bartlett might, in one of the historical photos, be able to identify his grandfather.

In his acknowledgement of both the information and the photos, Mr Bartlett noted that in the last of the photos sent, his grandfather was the fireman on the back left of the truck. This photo was in the family collection. What was equally important was that it had been quality scanned so he was attaching a copy of this scanned photo for our records (refer photo below).



Above: Glen Huntly Fire Station Crew - c.1920s, Eric Carroll, back right (GEHS collection).

He expanded further on the sentimental association with the Glen Huntly Fire Station as follows.

The fire station is an important part of my family history. My grandfather lived nearby in Waratah Avenue and worked there to supplement his income when he was a young man. He was introduced to my grandmother at the fire station when she went there with a friend who was dating another fireman. The story goes, that when they were due to go out on a date, my grandmother would wait outside for him to finish his shift and then they would run quickly to the next corner, because if the fire bell rang, when he was in sight of the fire station he would have to return to go off and fight the fire.

So in responding to a query, the Glen Eira Historical Society was to be the recipient of extra quality information for its Glen Huntly Fire Brigade file. This included a high quality scan of one of the photos in the file collection. One of the firemen in that group photo was now identified. The fireman at the back left of the truck was Eric Carroll (1908 - 1984). In addition the file was supplemented by a wonderfully warm family story that personalised the life of a young fireman in the 1920s.

Finally, as I studied those young firemen posing proudly in their truck with its polished fittings wearing their distinctive helmets, my mind slipped back a century. What a highlight it would have been in those early 1920s seeing the Glen Huntly motor fire truck, bell ringing, accelerating along Glen Huntly Road at over 45 miles an hour to a fire call. No wonder young boys wanted to be firemen when they grew up.

Neville Daynes

Member/Volunteer, Glen Eira Historical Society



Above: Glen Huntly firestation 1980 (GEHS collection).

HERITAGE MATTERS

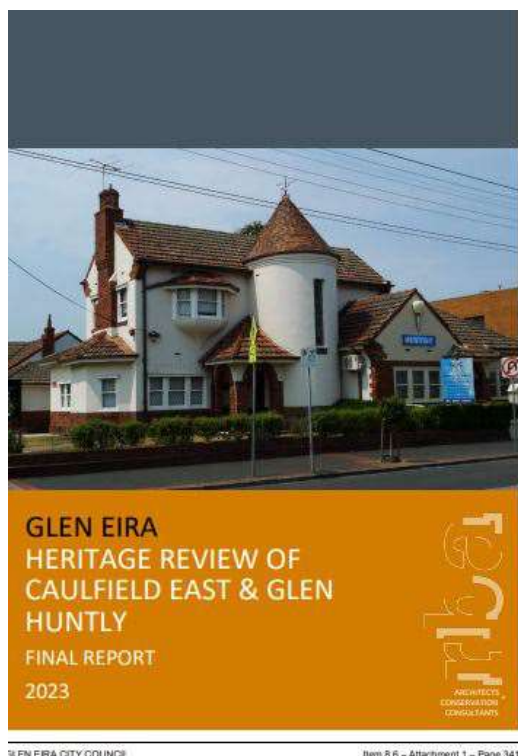
Caulfield East and Glen Huntly Heritage Review released

Along with a revised heritage citation for Caulfield South Commercial Precinct (Glenhuntly Road around Hawthorn Road), Council has completed the heritage review for Caulfield East and Glen Huntly.

Started in 2019, this long-awaited Report is now available via Glen Eira Council's Agenda for 2 May, Item 8.5. It identifies 15 heritage places and 10 precincts and is full of photos and history.

<https://www.gleneira.vic.gov.au/media/files/Agenda02052023.pdf>

- Item 5 Attachment 1.



Above: image courtesy of City of Glen Eira and RBA Architects + Conservation Consultants.

Community Stables and Booran Lodge Stables (Caulfield Racecourse) – no heritage protection

2/5/2023: Glen Eira Council abandons its Planning Scheme Amendment C227 (Caulfield Racecourse).

You may recall that one of the negatives about the recent successful Victorian Heritage Registration (i.e. State-level heritage protection) for Caulfield Racecourse is that the extent of the registration was not expanded to include the freehold land. Neither the historic Community Stables nor the Booran Lodge Stables on the Melbourne Racing Club's (MRC) freehold land are currently heritage-protected.

At its May meeting, Glen Eira Council voted to abandon its own local heritage protection for the

Racecourse which had proposed to include these stables on the freehold land. To quote from the report to Council (p320 of Agenda for 8 May 2023):

Although the complex remains substantially intact due to their original design and layout, it is not considered necessary to include these places within a separate, local Heritage Overlay. Council officers are currently preparing planning controls for this part of the Caulfield Structure Plan that will require the owners to promote and celebrate the history of the stables through interpretive signage or artistic installations that retain some original fabric.

This is a disappointing decision which leaves these stables at considerable risk of disappearing. You can read more at Item 8.5 – p315 of the 2 May 2023 Agenda

<https://www.gleneira.vic.gov.au/media/files/Agenda02052023.pdf>

@Heatherbrae1873

Many people will be familiar with looking over the fence at this landmark mansion, stables, Moreton Bay fig and garden on the south west corner of Neerim and Booran Roads. New owners Julie and Vince are now restoring it with great respect for its heritage. A big and wonderful project!

They are sharing the progress via Instagram page **Heatherbrae1873**. Easy for Instagram users but also viewable on Google etc. – just click on the Reels tab for their page.



Above: Heatherbrae main staircase June 2022 (Photo: Zina Sofer, GEHS Collection).

Searching for ...

GEHS recently had an enquiry about long demolished stables at the back of Station Street and (likely) Bond Street in Caulfield (opposite Caulfield Racecourse), with entry from the Members Carpark in the early 2000s. The person recalled:

- access via the driveway between Kambrook Rd and Bond St to the Members Car Park, then walk about halfway across, then turn towards the racecourse and walk about 10-15m
- entrance to the stables on the right hand side when looking towards the racecourse
- entry to the stables was through an archway with a gate, perhaps via a little main door you had to go through to unlock and open the gates up
- the courtyard was cobbled and there was a wall (brick or stone) between the car park and the stables which stopped after the first or second day yards
- the day yards went down to Kambrook Rd

We think these may have been the stables once used by trainer Basil Conaghan or those of E O'Sullivan whose house and stables were adjoining in Station Street. As recorded in our written records from Dr Heslop (veterinarian), these were acquired by Mr H Gullifer who built a motor garage and service station there with the business later also run by his sons.

If you know anything about this or have photos, please let us know – gehs@optusnet.com.au It all helps with our understanding of the impact and history of racing and Caulfield Racecourse all around the area.



Above: Heatherbrae interior (Photo: Zina Sofer, GEHS Collection)

Council's Annual Heritage Report

2 May 2023: Heritage Work Program Update 2023 reported Item 8.5

<https://www.gleneira.vic.gov.au/media/files/Agenda02052023.pdf>
- p315

The welcome inclusions (apart from abandoning the Caulfield Racecourse Amendment as discussed earlier) in this second Annual Heritage Report include:

- while still lagging similar municipalities, the City of Glen Eira has increased its recognition of heritage to now have local heritage protection for 179 individual heritage places and 35 heritage precincts
- heritage reviews for McKinnon and Caulfield North are underway and expected to be reported to the July Council meeting
- still to come are heritage reviews for Elsternwick (areas not covered in Part 1), Caulfield, Murrumbeena, St Kilda East, Bentleigh East, Ormond and the rest of Bentleigh and Carnegie not already done – total heritage review project due to be completed by 2027-28
- a basic outline of the six step planning scheme amendment process required for heritage

It is helpful to meet quarterly with Council Officers on history and heritage issues. Thanks to the City of Glen Eira for including our Society as well as our colleagues the City of Moorabbin Historical Society.

Anne Kilpatrick
Secretary/Vice-President, Glen Eira Historical Society
May 2023

VALE JOHN ATTWOOD

It is with sadness that we pass on the news of John's death on 9 February 2023. He had been a Life Member and generous benefactor of the Glen Eira Historical Society for many years. In the last few years, when he was less mobile, his grandchildren would bring him to our events.

John started work at the Murrumbeena Newsagency as a Paper Boy and worked up to owning the business. This kind, gentle and very well-mannered man was a favourite with everybody.

He had been given the nickname of 'The Mayor of Murrumbeena' for he knew everything about the area. A plaque about him is on the wall on the lane opposite his shop in Neerim Road. The lane is informally named 'Attwood Lane'.

John's advice and assistance to us when we were writing our book, *Along the Line – Caulfield to Oakleigh Rail Stories* were invaluable. Several of his recollections are in the book.

His great party trick was answering questions about winners of the Caulfield Cup. He knew every one.

John was a great family man and our condolences go to his large family.

Carol Stals
Member/Volunteer, Glen Eira Historical Society



Above: John Attwood with his daughter Janine at GEHS 50th celebrations in May 2022 (Photo: Zina Sofer)

EVENTS

Annual General Meeting

Wednesday 26 July 2023 at 7:30PM
Murrumbeena Bowls Club
Blackwood St, Carnegie

Featuring speaker:

Paul Long, Professor in Creative and Cultural Industries, Monash University on
Popular Music in History, Heritage and Archives

GEHS Exhibition at Glen Eira City Council Gallery Two

Musical Notes from Glen Eira

7 September - 1 October 2023

STOP PRESS

The MRC has announced a new grandstand concept to replace the Rupert Clark Stand (a vision, not a planning application yet), in addition to advertised plans for the new Glasshouse at Caulfield Racecourse.

June 2023 Newsletter Editorial team

Neville Daynes, Joy Mawbey, Barbara Hoad and Adriana Konidaris

GLEN EIRA HISTORICAL SOCIETY COMMITTEE

President / Treasurer - Barbara Hoad
Secretary / Vice-President - Anne Kilpatrick
Committee - Carol Stals, Carol Mayell
Committee meets monthly

**We thank David Southwick MP for kindly donating the
printing of this Newsletter.**

We acknowledge that the Boon Wurrung/Bunurong peoples of the Kulin Nation are the traditional owners and custodians of the area covered by the City of Glen Eira

PROUDLY SUPPORTED BY

Glen Eira City Council Community Grants and Bendigo Bank Murrumbeena

Community Bank · Murrumbeena



Address

965 Glen Huntly Rd Caulfield 3162

Get In Touch

Call: (03) 9077 5395 | Email: gehs@optusnet.com.au

Opening Hours

Open on Tuesdays 9am - 1pm
(appointments preferred)
Appointments at other times may be arranged
ABN: 11 335 469 474, A0041700U

Visit our Website:

<https://www.gehs.org.au>