



# GLEN EIRA HISTORICAL SOCIETY NEWSLETTER

## Eyes On Our Collection – A report from our March 2024 Speaker Series

Those 26 members and friends who attended the GEHS Speaker Series on Wednesday 27<sup>th</sup> March 2024 at the Murrumbeena Bowls Club were treated to something a little different.

On tables and stands at the front were examples of items from the extensive collection held at the Society's rooms, which soon attracted the attention of those present. As President Barbara Hoad noted in her opening remarks, the Glen Eira Historical Society has the largest and most significant local history collection in the municipality of Glen Eira.

Barbara then handed the meeting over to member Richard Darke who has played a key role in reorganising the collection and also in setting up displays. Richard began by inviting the audience members to a journey down memory lane, beginning with memories of attending the picture theatres in the 1950s and then on to home entertainments of the period. Participation from the audience was immediate.

Richard then invited Peta Darke to comment on three of the cameras on display. The first was a **Vest Pocket Kodak**; a folding camera with the film spool at the back. This was the camera model used by many World War I soldiers taking (frequently illegally) images of battle field conditions and which had an adjustable lens

feature. However the one displayed was a Model B that was in production between 1925 and 1934. Then came that old family standby, the **Kodak "Brownie" Box Camera** that was in production for nearly 70 years. This one was a Model F which was produced between 1924 and 1935. Finally, Peta presented a **Dux Episcop Projector** that could project images or objects placed under the body of the projector on to a wall or screen.



Cameras from GEHS' collection

Next, Barbara Hoad projected a sample of **glass slides** taken from 50 dry plate glass negatives

*continued on page 3*



Glass slide of Ball & Welch delivery vehicle. The Ball and Welch department store was at 180 Flinders Street from c. 1899 till the 1970s. (GEHS Collection)

## Contents

Eyes On Our Collection – a report from our March 2024 Speaker Series	1
From the President	2
Glen Eira Bands and Bandstands	5
Adolph Brockhoff and Caulfield	8
Memories of Brockhoff Biscuits.	9
An enquiry – Glen Huntly Road, Elsternwick	10
Events and Exhibitions	11
Elsternwick Guest House	12



Anne Kilpatrick (right) at the award presentation at RHSV on 28/5/24 (Photo Courtesy RHSV)

## From the President

This month I'd like to acknowledge some of our dedicated volunteers who recently received recognition for their service to our organisation and to history and heritage more broadly.

Anne Kilpatrick received an Award of Merit from the Royal Historical Society of Victoria for her outstanding work on protecting heritage buildings in the municipality of Glen Eira. Anne's dedication to a number of local heritage campaigns, involving hundreds of extra hours of complex, detailed and careful work over the past five years is impressive.

An example of this is when in January 2022 Anne noticed trees being chopped down and heritage buildings bulldozed at the Caulfield Racecourse. She decided to take action. As a result the Society was able to halt works at the Racecourse. Our subsequent nomination to include Caulfield Racecourse on the Victorian Heritage Register was successful. Anne continues to keep abreast of developments at the Racecourse.

Awards were also given to two of our wonderful long term volunteers, Carol Stals and Colin Kirkham, under Glen Eira Council's Volunteer Recognition Program. Congratulations to all.

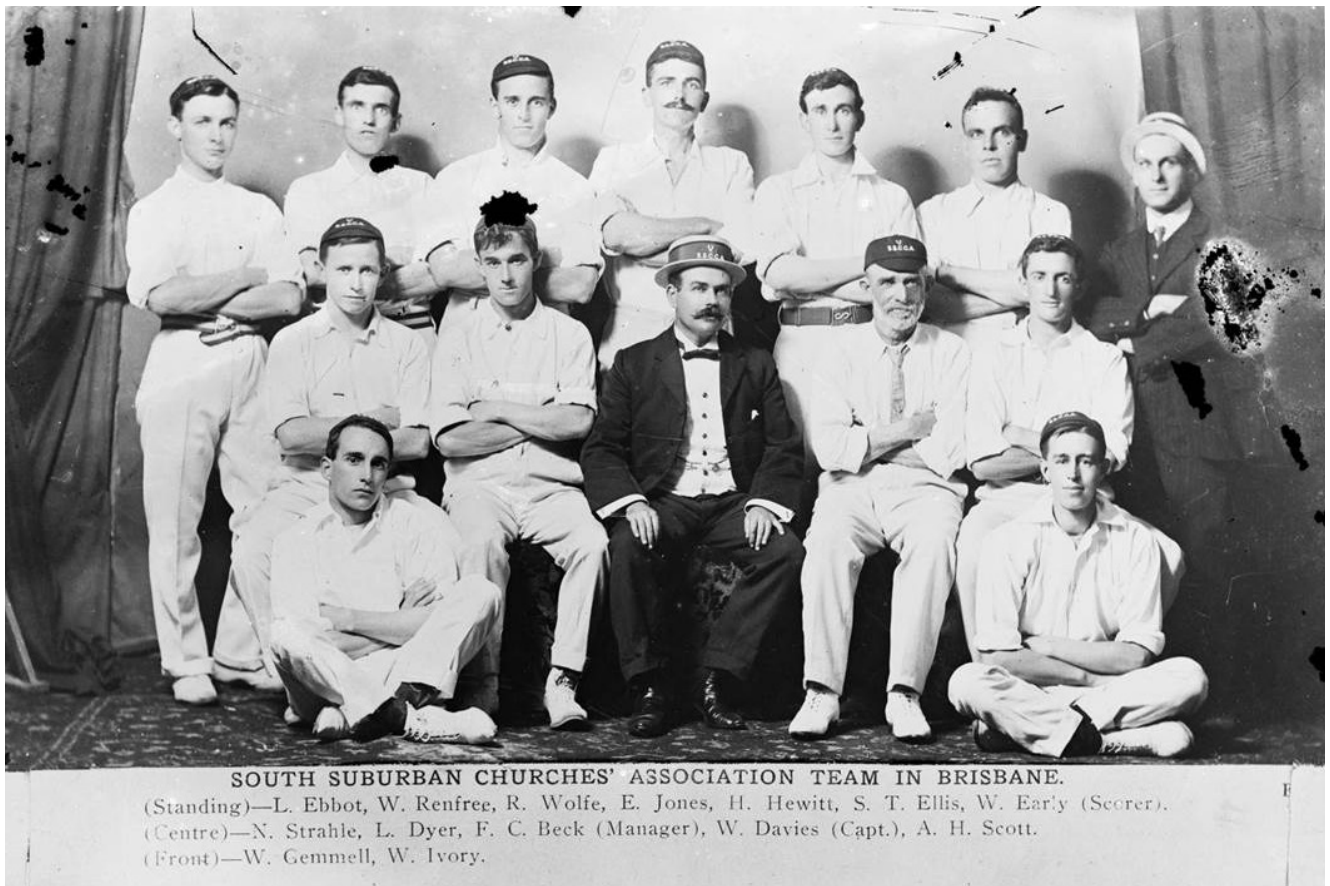
Our AGM for 2024 will be held at the Murrumbeena Bowls Club on Wednesday 31 July at 7.30pm. The speaker, Margaret Anderson, Director of Old Treasury Building will talk on 'Melbourne and its history of dissent'. We hope you can join us.

Happy newsletter reading!

**Barbara Hoad,**  
**GEHS President**







Glass slide of South Suburban Churches Association cricket team in Brisbane, 1910 (GEHS Collection)

donated sometime in the 1990s. They were mostly wonderfully clear images taken in the period 1880 to 1920 and produced as negatives for photographs. More recently these slides have been digitised using a grant provided by the Murrumbeena Branch of the Bendigo Bank. They cover a range of subjects and suburban scenes and will need further research to identify the people and locations.

Claire Barton spoke about her research into two properties; **5 Bambra Road** and **21 Bambra Road**. Records revealed that the former was owned by grazier, Charles McLennan in 1910. It later became a private hospital in 1976 and retained the stables converted into outhouses. The original house at 21 Bambra Road was demolished a few years ago and Claire produced a horse harness, an invalid's ceramic cup and crystal knife rests which she rescued from the rubble at the time the house was demolished.

Richard returned to invite the audience to join in a nostalgia trip about confectionery, biscuits, cleaning products, tobacco and cigarette brands, and the products of travelling salesmen. From the cardboard box on the table he produced a small



Entrance 5 Bambra Road, Caulfield North 2023 (GEHS Collection)

continued on page 4

tin of sweets which had contained hard boiled sweets; a popular product in the suitcase of the Raleigh travelling salesman.

Anne Kilpatrick then carefully and gingerly unwrapped a beautiful hand-made pottery bowl which provenance revealed had been made by the artist, **Neil Douglas** with the **AMB (Arthur Merric Boyd) Pottery** mark on the base. The bowl had been recovered, blackened from a fire and then stored in a shed in country Victoria for over 30 years. Fortunately the donor identified it as more than just rubbish. The artist Neil Douglas formed an artistic association with both the Boyd family in Murrumbeena with their tradition of hand-made pottery as well as the Eltham painting group with links to Heide. The bowl is indeed one of the treasures in our collection.



Earthenware bowl c. 1950s Neil Douglas AMB Pottery Murrumbeena (GEHS Collection)

Richard's final trip down memory lane took the audience along into fashions of the 40s and 50s including gloves and twin sets, suspenders, armbands and dust coats before moving on to popular backyard games He concluded with pens with nibs which he produced from his box together with a slate pencil before brandishing as a final



Pages from *John and Betty*, published Education Department of Victoria in 1951

piece de resistance, an ancient copy of *John and Betty*, the primary school reader known to pupils of the 1950s and 60s.

The last presenter was Heather Mallinson who produced a mysterious old wooden street sign, **Alfred Street S1** with unknown provenance, and initially assumed to be from the former City of Caulfield. But following further research the street sign was identified as being part of what is now the City of Stonnington. The old postcode S1 covered Hawksburn, Windsor and Prahran whereas Caulfield had the postcode S5. Heather wondered if there was a link to the Alfred Hospital, named after H.R.H, Prince Alfred, Duke of Edinburgh, who visited the Australian colonies in the late 1860s. There is an Alfred Street in Prahran not far from the hospital. The street sign has been offered to the Stonnington Heritage Centre and will join their collection of wooden street signs.

Richard then closed the meeting. He encouraged the audience to come to the front of the room and inspect the items of the collection on display as well as speak informally to the presenters while enjoying supper. It was agreed this had been a most informative meeting. It had given members and visitors a greater appreciation of the range of items in the GEHS collection.

**By Neville Daynes (GEHS Volunteer/Member)**



## Glen Eira Bands and Bandstands

In 19<sup>th</sup> century Britain, a growing movement promoted the benefit of public walks and open spaces for the health of rapidly increasing urban populations. Consequently, local authorities and wealthy benefactors developed public parks and gardens. Prominent in many of the urban parks was the bandstand, since music was seen as an important influence on moral health. Bandstands became focal points for positive communal entertainment in settings designed for the improvement of health as well as for leisure.

In Australia civilian bands were established progressively in the various states during the mid-19th century, and expanded when Australia became a federation in 1901.

Bandstands were constructed in many parks in the Glen Eira area although most have now been replaced by picnic rotundas.

The **Elsternwick Railway Reserve** and bandstand opened in 1905 but by 1909 the bandstand had been moved to **Hopetoun Gardens** because the popularity of the concerts had stretched the carrying capacity of the Railway Reserve. That

bandstand was substantially modified, probably in the interwar period and then in 2021 was replaced by a new bandstand/picnic rotunda built at ground level.

**Greenmeadows Gardens** were established in 1913. Caulfield City Council purchased the paddock from the Lempriere Estate for a recreation reserve and a bandstand was erected as part of the amenities. Today there is only a small gazebo in the gardens, the bandstand removed some time ago.

There is more on the history of Hopetoun and Greenmeadows Gardens in our May 2019 newsletter, available on our website. <https://www.gehs.org.au/wp-content/uploads/2020/07/Issue-17.pdf>

### Caulfield Park's bandstand

The Caulfield Park bandstand is unique in Glen Eira as the only remaining working bandstand dating from the early 20th century.

It dates back to 1918 when a bandstand was built at the Caulfield Military Hospital by the YMCA (Young Men's Christian Association), for the



Caulfield Park bandstand today (Photo GEHS)



Bandstand at Caulfield Military Hospital c1918, before it was moved to Caulfield Park (Courtesy Museums Victoria <https://collections.museumsvictoria.com.au/items/394858>)

entertainment of recuperating servicemen. It was officially opened by the Governor-General, Sir Ronald Crauford Munro-Ferguson on 23<sup>rd</sup> January 1918. However, three years later this bandstand was demolished and reassembled in Caulfield Park where in December 1921 it was opened by Prime Minister Billy Hughes.

The move to Caulfield Park was the result of action by The Caulfield Park Improvement League which proposed purchasing the YMCA bandstand for 100 pounds with Caulfield Council to contribute 5 pounds as well as paying the cost of removal and re-erection at Caulfield Park. At a Council meeting on 5th September 1921, Councillors estimated that removal would cost 25 pounds and construction of a brick base 35 pounds. It was also thought fitting to have a tablet placed on the stand memorialising the late former Town Clerk, Frederick Jowett (1887-1921), Secretary and Town Clerk to Caulfield Council for 34 years.

At the meeting on 8th October the report of the Building Surveyor brought some reality to the estimates. The quote for the removal of the bandstand from the military hospital (Australian General Hospital (AGH) No.11), would be 57 pounds and 10 shillings and the erection of the brick base, 75 pounds. Subsequently the Building Surveyor was instructed to provide the bandstand with a sounding board ceiling and arrange for the installation of electric lighting. He was clearly kept quite busy at this time as he also was instructed

to prepare a design and estimate for roofing the Hopetoun Gardens Bandstand.

A renewed interest in the value of outdoor concerts has resulted in band concerts in Caulfield Park; the most recent was in March this year.



Recent advertisement for Caulfield Park Bandstand Concerts (Artist Geoff Cook, courtesy Friends of Caulfield Park)

## Band recitals

The following newspaper excerpts found online at TROVE illustrate the importance of public music performances to community life in the early 20<sup>th</sup> century.

### A call for tenders

On 31<sup>st</sup> October 1924, the *Prahran Telegraph* reported that Caulfield Council had called



for tenders from the local bands to give 24 performances during the ensuing season in Caulfield Park and Hopetoun and Greenmeadows Gardens.

Tenders were received as follows:

Caulfield District Band

18 men in uniform

7 pounds, 10 shillings each performance

24 men in uniform

South Caulfield Model Band

6 pounds for performance for not less than 18 men  
(no uniforms)

20 -25 men could be provided

Elsternwick Citizens' Band

18 players without uniform

5 pounds, 5 shillings per performance

*Prahran Telegraph*, 11<sup>th</sup> March 1927 reported on a Sunday concert held in Caulfield Park by the **South Caulfield Citizens' Band**. 'Fewer people attended due to uncertain weather'.

'On Wednesday evening the band played at Hopetoun Gardens. Wednesday evening concerts would be continued as long as weather permits and they are well patronised.'

The band also advertised for the services of an energetic **collector**, preferably a bandsman, to obtain donations so that the band could extend its activities.

*Prahran Telegraph*, 6<sup>th</sup> May 1927 reported on a recital by the South Caulfield Citizens' Band at the Caulfield Military Hospital, for patients and visitors. The Band Committee thanked local residents for their financial support.

## Behind the Scenes:

### Caulfield Bands business from the Caulfield Council Minutes of 1921

At its meeting on the 17<sup>th</sup> May 1921, Council considered correspondence from the Caulfield City Band requesting a subsidy to assist in funding its performances. Council deferred its decision

and asked the band to quote for four months of Sunday afternoon performances plus one weeknight performance during that period.

Then the Caulfield Park Improvement League sent a deputation to the Council meeting on 31<sup>st</sup> May asking Council if it could persuade the Caulfield City District and Caulfield City Band to amalgamate to form a Caulfield Municipal Band. Council promptly referred this task to its Parks and Gardens Committee to meet with representatives to determine whether an amalgamation into a Caulfield Municipal Band was possible.

At the meeting on 4<sup>th</sup> August, the Parks and Gardens Committee had to admit defeat. Neither band would agree to amalgamation. What they did agree to was for each band to provide a uniformed band of not less than 20 players to provide service as requested by the Mayor for patriotic and charitable purposes. A performance would last for two hours during the band season between November and March, on 17 Sundays and weekdays. The Parks and Gardens Committee proposed it be empowered to enter contracts on the above basis and a grant of 125 pounds be given to each band. The Council agreed to these terms.

By the Council meeting of the 2<sup>nd</sup> November, the Parks and Gardens Committee reported it was far from impressed with how the bands were meeting their obligations. It was demanding all future performances be listed on an attached sheet. In addition, it proposed that a failure to provide the stipulated number of performers in uniform would incur a fine of 5 shillings per performer. For extra good measure the Council added the following demand: each band was to provide a copy of the programme to the Town Clerk 14 days before a performance and the Town Clerk was authorised to advertise each performance.

**By Joy Mawbey and Neville Daynes (GEHS Volunteers/Members)**

#### Sources:

<https://bandblastsfromthepast.blog/author/jdekorte/>

<https://nbca.asn.au/about/history>

Glen Eira Heritage Review of Elsternwick Structure Plan Area, 2019

## Adolph Brockhoff and Caulfield

In 1894, a certain Adolph Brockhoff became a resident of Caulfield. He had just purchased Nithsdale, a small mansion home on the corner of Glen Eira and Kambrook Roads. He was to live there until his death in 1923.



Adolph Brockhoff 1888 (SLV Collection)

Brockhoff's migratory path to Caulfield had been more roundabout than most. Born in 1841, he migrated to New York from Mecklenburg, Germany, just in time to enlist in September 1861 with a New York regiment of the Union Army, in the American Civil War. By the time he absconded, while on furlough in February 1863, Adolph had been promoted to Sergeant-Major.

Did Adolph return home to Germany or did the boat on which he had escaped from New York take him directly to England where he stayed working as a labourer? By then he would have acquired a working knowledge of English from his time in the army. What is certain is that Adolph Brockhoff had been a passenger on the ship *Maryborough* departing from Liverpool which arrived in Melbourne on the 12<sup>th</sup> December 1863. It had been a very eventful year.

Adolph's business career began with the establishment of a general store in Port Fairy. He was to marry Jessie Scott Douglas in 1867 and a son, Frederick Douglas Brockhoff, was born at Port Fairy in 1868. By 1870 the family had returned to Melbourne and was living in Berkley St Carlton. For the next few years Brockhoff was in a series of partnerships focused on the food industry. By 1880 Brockhoff and his family had moved to the more salubrious residential area of Gipps Street, East Melbourne.



Nithsdale, Caulfield 1972 (GEHS Collection)

In 1880 Adolph acquired the biscuit manufacturing firm of Smith and Sons in West Melbourne, immediately renaming it A.F Brockhoff & Co. A diverse range of products were produced, including self-raising flour, jam, preservatives and vinegar as well as biscuits. By the time Brockhoff had moved to Nithsdale in Caulfield he had bought out his partners and had begun to focus solely on making biscuits.

After 1900 a housewife was unlikely to leave off her shopping list one of the many varieties of Brockhoff biscuits such as Savoy, Salada, Chocolate Ripple, Gingernut or Morning Coffee.





Brockhoff Biscuit Factory in West Melbourne c.1900 (Picture Victoria)

By Carol Stals (GEHS Volunteer/Member)

#### Sources include:

<https://blogs.slv.vic.gov.au/our-stories/collection-care/reconstructing-brockhoff-biscuits-part-1/>

<https://glebesociety.org.au/socialhistory/the-story-behind-the-packaging-sydney-flour/>

<https://australianfoodtimeline.com.au/brockhoffs-biscuits/>  
Sands and McDougall directories

Ancestry including Index to Naturalisation Certificates 1851-1928, Find a Grave index

'Obituary', *Daily Telegraph* 13 October 1923 p8

*Caulfield's Heritage* by Geulah Solomon, 1989

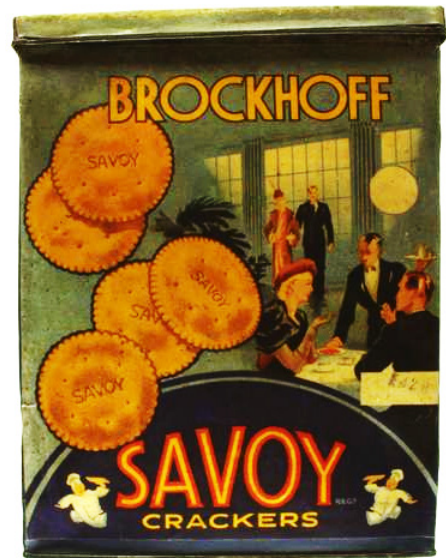
## Memories of Brockhoff Biscuits.

Growing up in the 1930/40s I remember shopping with my mother at our local Gardenvale shopping village. For our groceries we always went to Moran and Cato on the corner of Gardenvale Road and Lucy Street not far from our home. The original shop is still there today with the name just visible on the side wall.



Former Moran and Cato shop (now Café Omar) with barely visible 'ghost sign' (GEHS collection)

This was probably because we used to hear the Brockhoff Man jingle on our wireless set at home. I particularly remember the Teddy Bear and Savoy biscuits.



Brockhoff Biscuit Tin of Savoy Crackers (Museums Victoria <https://collections.museumsvictoria.com.au/items/1708367>)

I particularly remember seeing the rows of large biscuit tins high on the shelves behind the counter and seeing the grocer getting the tins down gently as the biscuits were loose inside and easily broken. There was no packaging in those years, everything was in bulk and the grocer would weigh the amount you needed.

There were many different biscuit brands but the one I remember most was the one with the picture of the Brockhoff Man on the front of the tin.

Some days my mother would let me go to the grocer to buy threepence worth of broken biscuits, and it was fun to open the paper bag and try to put the broken pieces together when I got them home – particularly the Teddy Bears.

It was a very different time – these days we just pick a packet of choice off the shelf.

By Ailsa Hunt (GEHS Volunteer/Member)

## An enquiry – Glen Huntly Road, Elsternwick

A request for information from a member of the public produces focused activity from the team of researchers in Claire, Heather, Margaret and others here at GEHS. Sometimes, to add further interest, there may be unexpected links between two quite separate requests or even to a researcher's own family history.

Such was the case with a request for information on the location of a service station which had operated in Elsternwick around 1937. The location of the garage was immediately identified as Glen Huntly Road, near the corner of Horne Street. This tiny building, wedged between a shop and a block of flats is still there and is now a cafe. Following the enquiry GEHS was happy to accept a number of photos of the garage and the Glen Huntly

Road streetscape; the photos show a two-storey building on the eastern side of the garage and a newsagent to the west.

A second unrelated enquiry came from a woman seeking information about her father's place of birth and the primary school he had attended. She also added that her grandparents and her father had lived at 38 Glenhuntly Road after World War 2 and her mother may have boarded there both prior to and during her parents' courtship and again briefly after the marriage in 1953. Accommodation was scarce in Melbourne in the decade after the war when both building materials and labour were in short supply.

The guest house was identified as the two-storey block of flats next to the service station of the initial enquiry. The flats, now numbered 230, are still visible today behind a high brick wall. Further



Service station, Glen Huntly Rd Elsternwick, 1937 (Photo Keith Gardener, GEHS Collection)





Block of flats at 230 Glen Huntly Road today (GEHS collection)

research revealed that the guest house was built in 1933 as Centenary House. An article and image of the 1933 building can be found on page 12.

The newsagent to the west of the service station in the 1937 photo was identified as the shop Claire's father sold white goods from in the 1960s.

Local history has never ending links to further research that enhance and enrich the past of the community.

**By Neville Daynes (GEHS Volunteer/Member)**

## Events and Exhibitions

### AGM & Speaker Series

Following the AGM, Margaret Anderson, Director of Old Treasury Building will speak on 'Melbourne and its history of dissent.'

7.30pm Wednesday 31st July 2024

Murrumbeena Bowls Club, 10 Blackwood Street, Carnegie VIC 3163

### GEHS Exhibition – Caulfield's Racecourse

3-27 October 2024

Glen Eira City Council Gallery - Gallery Two

Details and bookings for these events will be available soon on our website <https://www.gehs.org.au/>

## Elsternwick Guest House

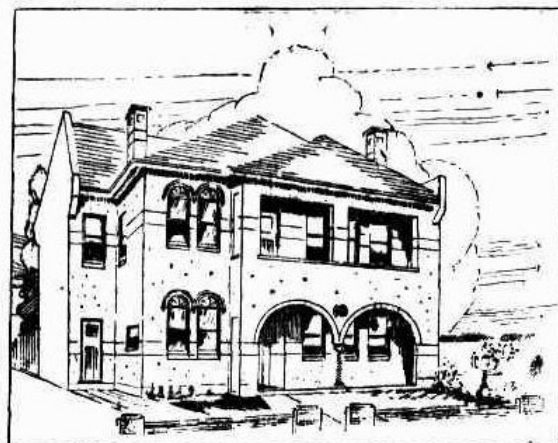
*The Age*, 22 August 1933 -

### Building and Architecture

Centenary House, a new guest house erected close to the Elsternwick station, on the beach side, embodies some of the latest ideas in this class of construction. In consequence, there should be a ready demand for the high-class accommodation to be offered.

The building has fourteen rooms, three bathrooms of ample proportions and a house maid's pantry. The plans also provided for large and small dining rooms, a well-equipped kitchen, with range and electric stove, and the heating of all rooms by both electric and gas fires. The main rooms have been finished on attractive lines, and the fireplaces formed of rich tapestry brick work, while the bathrooms, carried out in Tilux panels, present a pleasing appearance.

Externally, the building is finished in coloured cement and stucco, and is of an imposing character. The roof is of colour-blend terra-cotta



Centenary House, Glen Huntly Road, Elsternwick, built in 1933, (*The Age*, 22 August 1933 - Building and Architecture)

tiles. The premises were erected from the plans of Mr W J Silverwood, of Elsternwick, for the owner Mr G Bernasconi, news agent, and will be opened shortly under the management of Mrs A W Morellion who was formerly in charge of the Yallourn Hostel, conducted by the Electricity Commission.

**Research by Claire Barton (GEHS Volunteer/Member)**

#### June 2024 Newsletter Editorial Team

Neville Daynes, Joy Mawbey, Barbara Hoad

#### GLEN EIRA HISTORICAL SOCIETY COMMITTEE

President / Treasurer - Barbara Hoad

Secretary / Vice-President - Anne Kilpatrick Committee - Carol Mayell

Committee meets monthly

**We thank David Southwick MP for printing this Newsletter.**

We acknowledge that the Boon Wurrung/Bunurong peoples of the Kulin Nation are the traditional owners and custodians of the area covered by the City of Glen Eira

Community Bank · Murrumbeena



GLEN EIRA  
CITY COUNCIL

**PROUDLY SUPPORTED BY**  
Glen Eira City Council Community Grants  
and Bendigo Bank Murrumbeena

Address: 965 Glen Huntly Rd Caulfield 3162

Call: (03) 9077 5395 | Email: [gehs@optusnet.com.au](mailto:gehs@optusnet.com.au)

Opening Hours: Open on Tuesdays 9am - 1pm (appointments preferred).

Appointments at other times may be arranged.

ABN: 11 335 469 474, A0041700U

Visit our Website: <https://www.gehs.org.au>