



GLEN EIRA HISTORICAL SOCIETY NEWSLETTER

Celebrating Women's History Month in March

In acknowledging Women's History Month we look back to one of our past members **Sara Baldwin-Wiseman (1913 – 1988)** who served as a nurse in Singapore and later on Morotai Island in the Dutch East Indies (present day Indonesia) during WW2.

Sara was welcomed as a new member of the Caulfield Historical Society in February 1983 and later described as a popular Committee member. It wasn't until her death in October 1988 that her war record was highlighted, in an obituary in the Society's newsletter.

A trained nurse, Sara volunteered to serve overseas during WW2. Her military record shows she enlisted in her home town of Perth in August 1941; she was 28. On 9 September 1941 she departed Fremantle for Singapore on the HMAS *Wanganella*, joining staff of the 2/13th AGH (Australian General Hospital) who had travelled from Melbourne, including Nurse Vivian Bullwinkel. Their ship displayed a large Red Cross on its hull, signifying a hospital ship. Six days later it arrived in Singapore.

The war intensified, following the Japanese bombing of Pearl Harbor in December 1941, and the military hospital in Singapore where Sara was based was bombed.

Sara is quoted in Jan Basset's book on Australian Army Nursing, *Guns and brooches*:

Last night just after midnight the hospital was bombed. I was standing beside the bed of one of my patients giving him a dose of pain-killing mixture. All the glass doors and windows were blown inwards showering the patients in broken glass. My first job was to do a quick round of all the patients to make sure that no one was cut,

then cleared the beds of broken glass and got the men back in bed.

The nurses were evacuated from Singapore as the situation deteriorated. Sara was one of 53 nurses from the 2/10th and 2/13th AGHs who embarked on the 'grossly overloaded' *Empire Star* on 12 February 1942, bound for Batavia (present day Jakarta), only a few days before Singapore capitulated to the Japanese. Sara describes the departure from Singapore in *Guns and brooches* –

'Matron [of the 2/13th AGH] kissed every sister goodbye with the tears running down her cheeks as we boarded the transports...None of us wanted to leave, we all wanted to stay and look after our patients, but in the army one has no choice...'



Sara Baldwin-Wiseman second from left on the *SS Empire Star* (Australian War Memorial <https://www.awm.gov.au/collection/C1371034>)

Contents

Celebrating Women’s History Month in March	1
From the President	2
Edward Charles Murphy: teacher, sportsman, estate agent and mayor	3
The legacy of Mr Thomas W Pockett O.B.E. at Hopetoun Gardens in Elsternwick	5
GEHS presentation to residents of Victoria By the Park	8
Speaker Series November 2024	8
Events	8
Heritage Matters	9
Donations to our Collection	9
GEHS Activities	12

From the President

The year has started very well for us with volunteers returning on Tuesday 4 February 2025 when we reopened after the summer break. This year we will continue to open to the public on Tuesdays from 9am-1pm but we can also arrange appointments outside these hours.

Our Speaker Series will continue at the Murrumbeena Bowls Club and occasionally at other locations. In March we will be holding an afternoon and an evening session to accommodate members and friends in our rooms at 965 Glen Huntly Road, Caulfield. Details of all events will be emailed to members and posted on our website <https://www.gehs.org.au/> under News and Events.

Speaker Series dates for 2025:

March – two sessions, 2pm Tuesday 25 March and 7.30pm Wednesday 26 March

May - 7.30pm Wednesday 28 May

July - 7.30pm Wednesday 23 July (AGM)

September - 7.30pm Wednesday 24 September

November - 7.30pm Wednesday 26 November

Following the article on The Turner Family, early settlers to Augusta, WA, in our December 2024 newsletter, I am very pleased to say that GEHS member, Claire Barton’s efforts to find a home for these important family photo albums finally met with success. The State Library of Western Australia was very happy to accept the two albums which arrived there safely in late February. The timing was perfect they said, as every five years the library hosts a reunion of Turner descendants and the next one is coming up in May - the library will now have something special to show the family.

This newsletter features an article by Noelle Jones, editor of the Melbourne Tram Museum’s wonderful journal *The Bellcord* – thank you Noelle. We welcome newsletter articles from members and others with stories to tell about Glen Eira’s history or suggestions for future newsletter topics.

Barbara Hoad,
GEHS President



Celebrating Women's History Month in March cont'd

The *Empire Star* suffered three direct hits on the journey, with some loss of life. Eventually it arrived in Batavia, where most passengers disembarked.

The remaining nurses from the 13th AGH departed Singapore on the *SS Vyner Brooke*, not long after the *Empire Star*. The *Vyner Brooke* was not so lucky and encountered Japanese bombardment and sank near Bangka Island (east of Sumatra). Nurse Vivian Bullwinkel was onboard the *Vyner Brooke* and has been widely recognised for her outstanding courage as the sole-survivor of the Japanese massacre of nurses, officers and servicemen which followed on the beach at Bangka Island.

Sara arrived safely back in Fremantle on 23 February 1942 and appears to have spent the next few years in Perth, then Melbourne. Her service record shows she departed Sydney for Morotai Island on 18 April 1945 to continue her war service and remained there until the war ended with the Japanese surrender on 15 August 1945. She arrived back in Fremantle a few months later on 23 November 1945.

Sara retired from the services in 1963 and eventually settled in North Caulfield, joining the historical society in 1983. Following her sudden death in 1988 at the age of 75, the Caulfield Historical Society newsletter noted that in addition to her work for the historical society Sara was an active member of the Retired Nurses Association and a keen member of the Caulfield Croquet Club where she also instructed.

We remember Sara Baldwin-Wiseman and Vivian Bullwinkel in 2025, the 80th Anniversary of the end of WW2.

Barbara Hoad (GEHS President)

Sources:

Award of Australian Royal Red Cross – Lieutenant Vivian Bullwinkel NAA: B2458, F31029

Caulfield Historical Society Newsletter, Issue October 1988

Guns and Brooches - Australian Army Nursing from the Boer War to the Gulf War by Jan Basset (1992)

'Horror on a beautiful beach' *Sunday Age* 11/6/2023

<https://www.awm.gov.au/articles/blog/vivian-bullwinkel>

Sara Baldwin-Wiseman's record held National Archives Australia - NAA: B883, WX11173

The Story of the 13th Australian General Hospital, 8th Division AIF Malaya by Lex Arthurson (2009)

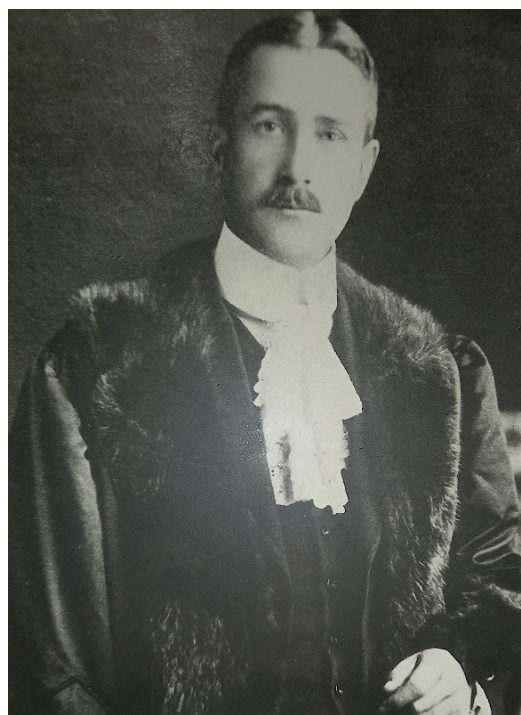
Edward Charles Murphy: teacher, sportsman, estate agent and mayor

Edward Charles Murphy (1870-1950) was the first mayor of the newly proclaimed City of Caulfield in 1913-14.

Originally a teacher, in a major career shift Murphy became a partner in the Collins Street auctioneer Baylee & Co, a firm that had been established in the 1880s land boom.

Throughout his life, Murphy was involved in a wide range of community activities. He was a Justice of the Peace and a keen sportsman, playing cricket and football in his youth and golf in later years.

Murphy was born in Maryborough on 24 March 1870, the eldest child of Irish-born Edward Scott Murphy (1839-1928) and Hannah Jane Carbis Williams (1849-1928).



Edward Charles Murphy (1870-1950). Photograph courtesy of the History and Heritage Team, Glen Eira City Council.

Edward Charles Murphy: teacher, sportsman, estate agent and mayor con't

Murphy's father was a mounted police constable, based in Tarnagulla, north of Maryborough, subsequently being assigned to various postings around the Victorian goldfields area, including Dimboola, Bungaree, Piggoreet, Ballan and Ballarat.

After finishing his schooling, in February 1885 Murphy became a pupil teacher at Blakeville, a small timber cutting township 12km north of Ballan.

Until the early twentieth century, teacher training in Victoria generally followed an apprenticeship model. Head teachers recommended promising students, around 13-14 years old, for appointment as pupil teachers. Over a period of several years, pupil teachers would teach at a school as well as study, receiving instruction from a head teacher, sitting annual exams and being regularly assessed by school inspectors.

Once his 'apprenticeship' was completed, Murphy needed to find another position, as Blakeville school was too small to be eligible for another qualified teacher. For a year he shuttled through various brief posts, until in 1892 he was appointed head teacher at the Staffordshire Reef School, where he remained for the rest of his 20-year teaching career.

Near Scarsdale, southeast of Ballarat, Staffordshire Reef was a mining town. Murphy was the tiny school's sole teacher – in 1890 the school had just 39 pupils on the roll. In 1899 he married Isabella Young (1874-1949), the daughter of a local family.

Murphy, in common with many teachers at that time, was a highly respected member of the local community. He played cricket in the Scarsdale team and was president of the Smythesdale and Scarsdale Race Club. He was a Mason and a committee member of the Scarsdale branch of the Australian Natives Association (ANA), a friendly society formed to provide sickness, medical and funeral benefits to its members. In February 1901 over 100 square kilometres of the district were ravaged by bushfire: Murphy was secretary of the bushfire relief fund.

However, teachers' salaries – especially at very

small rural schools such as Staffordshire Reef – were low and Murphy had a growing family to consider. He was also finding it difficult to adapt to the school curricula introduced in 1902 by Frank Tate (1864-1939), the newly appointed Victorian Director of Education. In mid-1905 Murphy resigned his teaching position and, with his wife and three daughters, moved to Melbourne where he became an estate agent and auctioneer.

Settling in Elsternwick, Murphy again engaged with the local community, through business, sporting, social and charitable activities – an ongoing theme throughout much of his life. Murphy was a committee member of the Elsternwick Cricket Club and vice-president of the Caulfield Tally-Ho amateur athletics club. He was instrumental in forming the Elsternwick District Bowling Club at Hopetoun Gardens. In addition, he was active in the Elsternwick Progress Association as well as the Elsternwick and Caulfield branch of the ANA. He was a foundation member of the Elsternwick Golf Club (1909) as well as the Kingston Heath Golf Club (1925), where he became a Life Member in 1945. A fourth daughter was born in 1908.

In 1911 Murphy joined the Caulfield Town Council as an independent. Two years later he was appointed the first mayor of the newly proclaimed City of Caulfield.

As mayor, Murphy officiated at the grand opening ceremony of the Prahran & Malvern Tramways Trust's Balaclava, Glen Huntly and Elsternwick electric tram extension on 13 November 1913.

From 1915 until 1920 Murphy was a member of the Prahran & Malvern Tramways Trust, being the Caulfield Council's representative on the Trust. The Trust was dissolved in 1920 when its tramway operations were taken over by the Melbourne & Metropolitan Tramways Board.

At the end of World War I, Murphy was chair of the Caulfield repatriation committee which assisted servicemen in returning to civilian life.

He was not the only family member to be active in the community. His wife Isabella was a foundation member and treasurer of the Elsternwick Croquet Club, as well as raising funds for various organisations including the Caulfield Convalescent Hospital, the Red Cross, the Austin Hospital and the Free Kindergarten Union.

In 1921 Murphy resigned from the Council. His partnership in the firm Baylee & Co was dissolved in 1937, however he appears to have continued in business for another ten years, under the name Baylee, Murphy & Co.

Isabella died in 1949. Murphy passed away in Glen Iris 18 months later aged 80, survived by his four daughters and their families.

By Noelle Jones

Thank you to Noelle who prepared this article for us from her extensive research into Murphy for an earlier article she wrote for the Melbourne Tram Museum journal *The Bellcord*. <https://www.hawthorntramdepot.org.au/downloads/bellcord/bc-061.pdf>

The legacy of Mr Thomas W Pockett O.B.E. at Hopetoun Gardens in Elsternwick

Recently GEHS was asked to prepare and deliver a talk to residents of Victoria By the Park, an aged care residence, adjacent to Hopetoun Gardens. In the process of undertaking the research on Hopetoun Gardens, we discovered fascinating information on Mr Pockett and his influence on what we see today in the gardens. He was truly an unsung hero of the horticultural scene in Melbourne. But first, let's discuss the broader picture of the land that makes up the gardens.

Records from the late 1870s show the area, now known as Hopetoun Gardens, bordered by Parkside Street, Victoria Street and Glenhuntly Road, was used for grazing and market gardens - farmed by the Ilbery family. By the start of 1900, with population growth across Elsternwick there was need for more green open space for residents. The Elsternwick Railway Reserve, near the Elsternwick train station, was inadequate for the huge crowds that assembled there, especially on Sundays for the band concerts. The Elsternwick Progress Association (EPA) agitated for a reserve or a larger area of open space. The Chairman of EPA, Dr RE Weigall scouted for suitable sites and put a deposit on the land before Caulfield Council purchased it for 350 pounds per acre, (the land being five and a half acres at the time.) According to *The Age* - "Cr. Phillips, the mayor stated that the council had obtained a loan of 2,000 pounds with which the land had been purchased. The Government had given 250 pounds more and up to date 2,344 pounds had been spent on the park." In 1908, a Board of Trust was established to oversee the gardens and on Empire Day, 31 July 1909 the gardens were officially opened.



Portrait of Thomas Pockett, 1901 (Studio of Stewart & Co, Bourke Street, Melbourne, Pocket Family Collection, courtesy <https://www.jstor.org/stable/24919038?seq=2>)

Mr Thomas W. Pockett O.B.E.

Although he wasn't given much public credit, it appears over time Mr Thomas W. Pockett was responsible for a great deal of what we see today in Hopetoun Gardens. Pockett was a well-respected horticulturalist and curator of Malvern gardens for over 30 years. Originally from England, as a young man, he applied for the horticultural position at Malvern Council and migrated to Australia in 1857 establishing an enviable reputation for his horticultural skills and knowledge. He was responsible for the layout, curation and care of Spring Road, Central Park and other garden sites in Malvern. He also prepared the plan for the Kew and Burnley gardens. Interestingly Thomas's brother George was also a horticulturalist and was appointed as curator of Kew municipality gardens in about 1907.

continued on page 6

The legacy of Mr Thomas W Pockett O.B.E. at Hopetoun Gardens in Elsternwick cont'd

Research shows Pockett had a major influence on the design and layout of the Hopetoun Gardens in the early 1900's. From the centre of the area, a clear view of Hobsons Bay was evident one way and the You Yangs the other. (Not possible today!). To begin with, the garden area was fenced to keep out wandering livestock. The layout was a mixture of Federation and Victorian landscaping with formal or symmetrical path configurations and intersecting paths, irregularly shaped flower beds and sweeping lawns. In many ways Thomas was a progressive environmentalist, in addition to his horticultural skills and knowledge. He used readily available manure from nearby horses and other livestock to enrich the soil and realised Australian and South African trees were better suited to the drier climate than European elms, pines and other "colonial" trees. Although a world renowned specialist in growing and propagating chrysanthemums, his wider knowledge of horticulture was evident across the gardens he designed and cared for. Newspapers on <https://trove.nla.gov.au/> contain a number of *Letters to the Editor* written by Pockett as he travelled overseas in 1901 sharing his observations on parks and gardens and various tree species. Pockett was awarded an O.B.E. in 1945 for services rendered to horticulture and the world wide fame of his special chrysanthemums – many named after royalty. He died in his home in Healesville in November 1952 aged 95. Interestingly both his sons were also involved in horticulture.

Trees

At the time Hopetoun Gardens were developed in the early 1900s "Colonial Trees" were preferred plantings, however, Mr. Pockett who had travelled extensively, was an advocate for using Australian native trees such as the Illawarra Flame and other trees from drier, warmer countries. The gardens today contain healthy specimens of a few uncommon species e.g. Wild Plum and Cape Bushwillow, native to South Africa and Turpentine, a native species but uncommon in Victoria.

Other trees in the gardens are:

Canary Island Date Palms (*Phoenix canariensis*) of varying ages were planted across the garden, often used as specimen trees in parks and



Flame Tree at Hopetoun Gardens
(Photo GEHS February 2025)

gardens. They originated from the Canary Islands off the coast of N.W Africa.

English Oak (*Quercus robur*) An important tree in England and Europe over the centuries for its timber, used for building and furniture making. It prefers good rainfall but can adapt to drier conditions.

Cork Oak (*Quercus suber*) This type of oak is native to Spain and Portugal and North Africa including Morocco. Its bark is rough and thick - protection in hot, dry weather. It was used for making corks for bottles.

Deodar (*Cedrus Deodara*) 'Deodar' means 'divine tree' in Sanskrit and is native to the Himalayas. Cedars have an aromatic timber and are used in building and carvings due to their durability and rot-resistant nature. The oil can be extracted and used for medicinal purposes. They are the national tree of Pakistan and featured in writings by Rudyard Kipling.

Kanooka (*Tristanopsis laurina*) A native tree often referred to as the water gum, it grows along the coastline from Gippsland to southern Queensland. It makes an ideal tree for the home garden or a



Bunya Pine at Hopetoun Gardens
(Photo GEHS February 2025)

sturdy street tree with small yellow flowers in summer.

Camphor Laurel (*Cinnamomum camphora*) This tree is native to S.E. Asia and can grow 20-30 metres high. The wood was used to make chests or boxes for storing clothes or bedding. The tree produces camphor oil which is used as an insect repellent in camphor balls.

Wild Plum (*Harpephyllum caffrum*) A native of South Africa, this uncommon tree is related to the mango and cashew nut. The fruit is slightly sour and used to make jellies and rose wine. You are unlikely to see fruit on this tree because both a male and female tree is needed for pollination.

Bull Bay Magnolia (*Magnolia grandiflora*) A beautiful tree, introduced in 1732 to Britain from its home in the hot and humid states of Florida, Texas and Arkansas. Grown from seed, plants can take 20 years to flower. It has beautifully scented flowers and is evergreen. Because of our drier climate, the leaves tend not to be as large as in more wet humid places.

Bunya Pine “Bunya” is the Aboriginal name. It is part of the *Araucaria* Family which is native to Chile

and can grow to 50 metres in height. The Bunya was of immense cultural significance to the life and food security to the Aboriginal people. One tree can produce about 5 kgs of cones. The cones shed their seeds which are sweet when roasted or boiled - the taste is like parsnip or chestnuts. The foliage is prickly but the timber is valuable. Beware NOT to stand near a Bunya in case a cone lands on your head!

Cape Bushwillow (*Combretum caffrum*) This is a very rare tree in Australia, though not uncommon along rivers and streams in moist places of South Africa. It has a gentle drooping structure and provides shade, much like an English willow. To the Zulus, the tree was valued as they believed its bark acted as a charm over enemies.

Cape Chestnut (*Calodendrum capense*) A beautiful tree bearing delicate orchid like flowers in shades of mauve to white, it grows slowly and originates from South Africa. It is more closely related to the citrus family than European species of chestnut trees but got the “chestnut” name because its flowers resemble those of horse chestnut trees.

Turpentine (*Syncarpia glomulifera*) A native tree, its distinct foliage smells of turpentine when crushed. With a tall straight trunk, it is valued for its timber and its resistance to rotting. The wharf at Lord Howe Island is said to be created with this timber as it resists marine invertebrates and termites. It can grow to 60 metres high and is thought to live for more than 500 years.

Illawarra Flame (*brachychiton acerifolius*) This tree is one of the most characteristic of Australian trees with large maple like leaves and resplendent scarlet flowers which develop following the loss of foliage. They are one of the few deciduous native trees, very dramatic and the flowers appear to show the tree “on fire” and are more numerous after hot, dry weather. The Aborigines used the fibrous bark to make cord that was used in fishing nets and basket ware. They can grow to 30-35 metres high.

Heather Mallinson (GEHS volunteer)

Sources include:

Public Notices and Letters to the Editor found online at TROVE

Glen Eira City Council brochure - Hopetoun Gardens Interpretive Tree Walk

GEHS presentation to residents of Victoria By the Park

In late 2024, Victoria By the Park, an aged care facility near Hopetoun Gardens in Elsternwick, asked if GEHS could deliver a talk on the history of the gardens. Using information and photos plus a small model of the Hopetoun Gardens cannon (from GEHS' collection), we assembled interesting information for residents. Two GEHS volunteers (Joy and Heather) arranged to deliver the presentation in two parts. The first session dealt with the garden's history and the people involved in the layout and selection of trees

planted in Hopetoun Gardens. The second session was designed to take residents for a stroll in the gardens to identify many of the original trees, still growing today. Unfortunately the day we visited in November it bucketed with rain and the walk was postponed. With more settled weather in March, we hope to deliver the walk and talk very soon.

It was lovely to hear some of the residents' stories of their connection with the gardens. Over the years, children's parties, picnics and other social outings were enjoyed in the shade of trees planted in the early 1900s.

Heather Mallinson (GEHS Volunteer)

Speaker Series November 2024

Author Talk by Boris Frankel at Murrumbeena Park Bowls Club

Boris Frankel entertained us with selected anecdotes from his book *No Country for Idealists*, a dramatic account of his family's experiences and travels from the early 20th century to 1970, through the Russian Revolution, Stalin era, Cold War and Australia's initial embrace of communism through to the 'Reds under the beds' response in the 1950s and 1960s.

His talk selectively dealt with the emigration of his parents, Abraham and Tania, from Russia and Poland respectively, their very active social life and political activism in Melbourne and their subsequent targeting by ASIO as 'subversives' because of their contact with the Petrovs and other Russian diplomats.

The family returned to the USSR in 1956 in response to a propaganda campaign by the Soviet Government at the very moment that Khrushchev denounced Stalin and the excesses of Stalinism were exposed to the world, shattering the rosy view of Communism held by many in the West.

Regarded with suspicion by Soviet authorities and suffering from the deprivations in Khrushchev's Russia, the family spent the next few years struggling to return to Australia.

For many of us, it resurrected memories of the times that we have lived through, of Soviet dictatorship and the Menzies' authoritarian government characterised by racism, the White Australia Policy and censorship. Boris had a wonderfully evocative slide collection of black and white photos of family members that also reminded us of our own family albums from that era.

Joy Mawbey (GEHS Volunteer)

Events

Book launch in Murrumbeena

Colin Smith, the author of three books on the Boyd family of Murrumbeena is launching his new book *A Murrumbeena Scrapbook* at 2pm on Sunday 6 April 2025 at Murrumbeena Bowls Club, 10 Blackwood Street, Carnegie. Join him for an afternoon of Murrumbeena memories and afternoon tea. This is a free event, bookings not required. *A Murrumbeena Scrapbook* will be on sale for \$30.

Donations to our Collection

Cookbooks - Carnegie State School mothers club (pre 1966), St Patrick's Murrumbeena and St Patrick's PS OHSC, Dec 1995 and Hughesdale Kindergarten Mothers Club.

Autograph books – one dated 1908 contains poems, ditties and sketches, the other dated 1951 includes autographs of St Kilda footballers/coach, GTV nine celebrities and members of the Russian and Afghanistan teams competing in the 1956 Olympic Games in Melbourne.

Duncan Cornelius Mackinnon (former Councillor and Mayor of Caulfield), various items –

- A folder of real estate brochures dating from the 1920s to 1950s, collected by DC Mackinnon during his time as a solicitor. The folder had been kept in the archives of Mackinnon Jacobs Lawyers in Boronia (the firm started by Mackinnon in Queens Street, Melbourne in 1919, after he returned from WWI) for at least 60 years, waiting for a descendant to show up. That descendant was Mackinnon's grandson Peter Anderson who donated the brochures and other items to GEHS in November 2024
- A photograph of a scroll presented to DC Mackinnon for his time on Caulfield Council (1924-1939, Mayor 1932-33)
- Copy of a letter written by DC Mackinnon to his mother during WWI, dated 1916.

Heritage Matters

This year's planning and heritage agenda has burst out of the blocks with news everywhere.

10-16 Selwyn Street Elsternwick (Woolworths proposed development)

You'll recall that there was a second VCAT decision back in September 2022 and Woolworths hold a current Planning Permit for that proposed development. However they have now applied for a Ministerial Permit with a new set of plans, including affordable housing, which adds three storeys back to the approved six storeys for the South tower and one storey to the approved nine storeys for the North tower - a great sadness for the community needing to once more address this issue/proposal which dates back seven years. GEHS is making a submission currently.

You can view the plans and other documents here:



1994 photograph of Glenmoore (H059) at 1 St Georges Road, one of the properties impacted by the Woolworths development. (Courtesy Glen Eira City Council – photographer Andrew Ward for Caulfield Conservation Study)

<https://www.planning.vic.gov.au/planning-approvals/ministerial-permits-register/ministerial-permits/38c29f67-eab5-ef11-b8e8-000d3ad1b913>

Delays in Planning Amendments

Delays continue since we reported last September for those Planning Amendments which include Heritage Reviews sent by Glen Eira City Council, to the Department of Planning and Transport for the Minister. Unfortunately, there is still no clear information about why the Minister for Planning is delaying these decisions state-wide, not just for Glen Eira, with the risk that heritage is being sidelined. We would say that housing **and** heritage are vital. As mentioned in our September 2024 edition, this has resulted in Glen Eira Council suspending for 2024-25 the commencement of any more heritage reviews - not good.

Announcements for Chadstone and Moorabbin Activity Centres

The final Activity Centre Plans are being worked on currently according to the web page below, last updated 27/2/2025. Part of Murrumbeena (for Chadstone Activity Centre) and part of Bentleigh / Bentleigh East (for Moorabbin Activity Centre) will be affected. Summaries of the plans can be found at:

<https://www.planning.vic.gov.au/guides-and-resources/strategies-and-initiatives/activity-centres-program/chadstone> &

<https://www.planning.vic.gov.au/guides-and-resources/strategies-and-initiatives/activity-centres-program/moorabbin>



Photo showing Interim Protection Order on front gate of Halstead (Photo GEHS March 2025)

Halstead, 23 Bambra Road Caulfield North (VHR H0450 / H010)

A Heritage Permit has been granted by Heritage Victoria for a new driveway, fence repairs and landscaping in the front garden. It applies to Lot 1 (front) with requirements for further plans and reports. However there is currently an Interim Protection Order by Heritage Victoria (on display at front gate) over Lot 1 as a request has been lodged for additional land (i.e Lot 1 in full) to be added to the H0450 listing for Halstead. A hearing date is pending with Heritage Council Victoria. You can read the Heritage Permit via the first link below (a search for "Halstead" will easily bring it up) and keep an eye out for the Hearing date via the second link below:

<https://www.heritage.vic.gov.au/permits-and-approvals/recent-permit-decisions> &
<https://heritagecouncil.vic.gov.au/decisions/reviews-and-hearings>

467-473 Neerim Road, Murrumbeena - Glen Eira Planning Scheme Amendment C267glen and Planning Permit Application PA2403365

This is a new proposal on the eastern edge of the Murrumbeena Shopping Centre on surplus government land. The Engage Victoria website says 'The Minister for Planning has received a request from MAKE Property Group Pty and Assemble NRM Pty Ltd for accelerated assessment via the Development Facilitation Program.' This



For sale sign at Halstead, showing rear view of house and garden. The house is still on the market. (Photo GEHS 3/11/2024)

type of *priority* project is decided by the Minister for Planning or within her Department. Public submissions closed on 28/2/2025 and GEHS has lodged a submission with our concerns (thanks Carol Mayell). You can read about the proposed eight storeys mixed use building here:

<https://engage.vic.gov.au/draft-glen-eira-planning-scheme-amendment-c267glen>

Caulfield Racecourse

A proposal for Mount Scopus to consolidate all its school locations here in Caulfield East adjacent to the Racecourse has been in the news, with a potential sale of the land to the school by the Melbourne Racing Club (MRC). Glen Eira's Planning

continued on page 12

Register records that on 20/12/2024 a Planning Permit was issued for a **2 lot subdivision (stage 1 of a staged subdivision)** on land adjacent to a road in a Transport Zone 2. It also records that on 2/01/2025 a Planning Permit was issued for a **351 lot subdivision (stage 2 of a staged subdivision)** on land adjacent to a road in a Transport Zone 2 – this is a change to the initial application for a 729 lot subdivision which we reported in our September 2024 newsletter. As this unfolds under the new Chairman, John Kanga, and new Board, we will provide updates in future newsletters.

So, much going on to draw our attention to heritage and planning issues overall for Glen Eira and beyond.

Anne Kilpatrick (GEHS Secretary)

GEHS Activities



GEHS member Carol Stals speaking at the Graceburn Avenue Community Open Day in December 2024
(Photo from Facebook with permission)

March 2025 Newsletter Editorial Team

Joy Mawbey, Barbara Hoad

GLEN EIRA HISTORICAL SOCIETY COMMITTEE

President / Treasurer - Barbara Hoad

Secretary / Vice-President - Anne Kilpatrick Committee - Carol Mayell

Committee meets monthly

We thank David Southwick MP for printing this Newsletter.

We acknowledge that the Boon Wurrung/Bunurong peoples of the Kulin Nation are the traditional owners and custodians of the area covered by the City of Glen Eira

Community Bank · Murrumbeena



GLEN EIRA
CITY COUNCIL

PROUDLY SUPPORTED BY
Glen Eira City Council Community Grants
and Bendigo Bank Murrumbeena

Address: 965 Glen Huntly Rd Caulfield 3162
Call: (03) 9077 5395 | Email: gehs@optusnet.com.au

Opening Hours: Open on Tuesdays 9am - 1pm (appointments preferred).

Appointments at other times may be arranged.

ABN: 11 335 469 474, A0041700U

Visit our Website: <https://www.gehs.org.au>